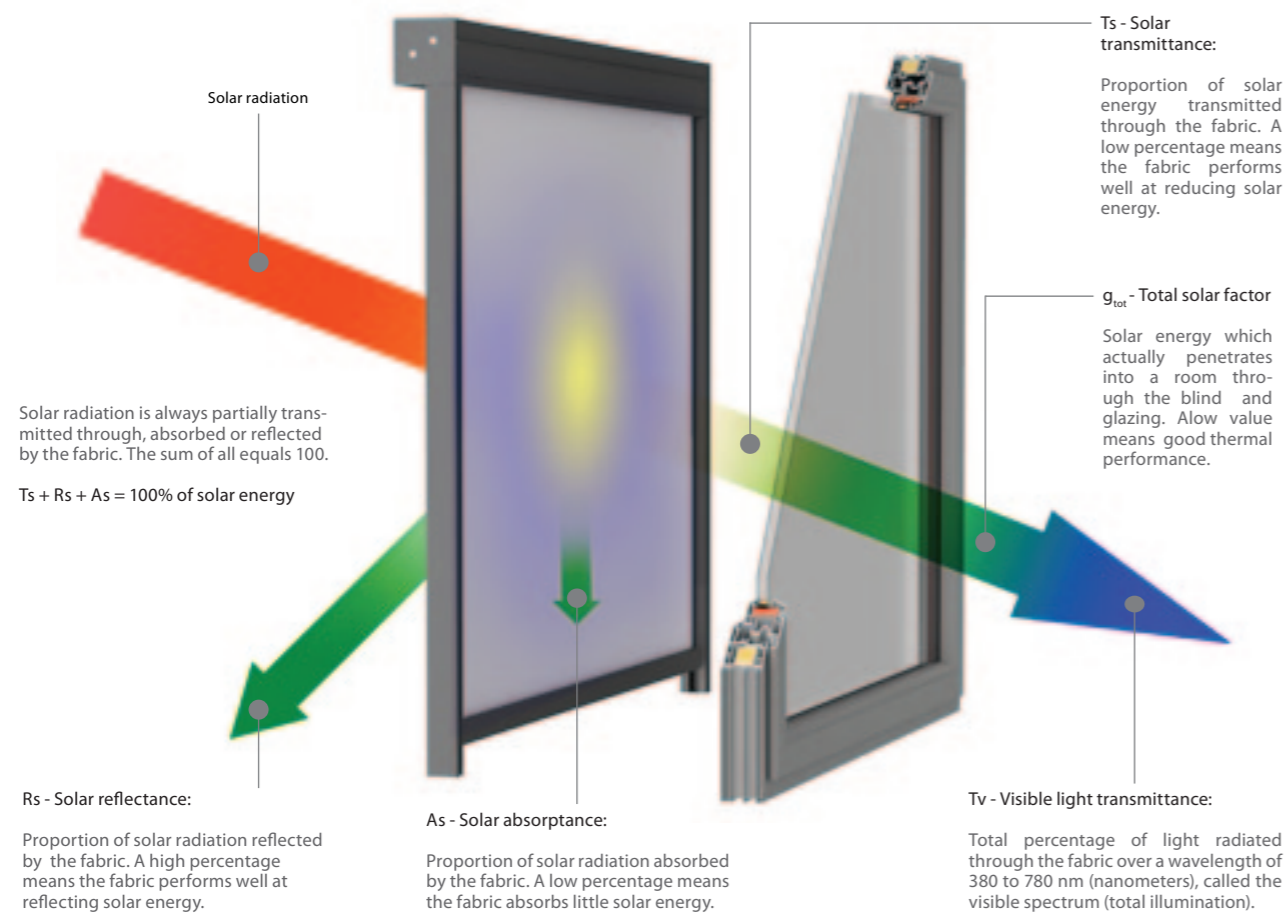




SCREEN FABRICS

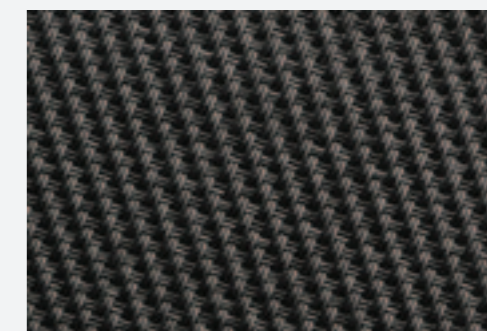


OPENNES FACTOR:

Relative area of the openings in the fabric. It is considered as independent of the colour.
 For fabric with the same weave, it should be measured using the darkest colour in the range.

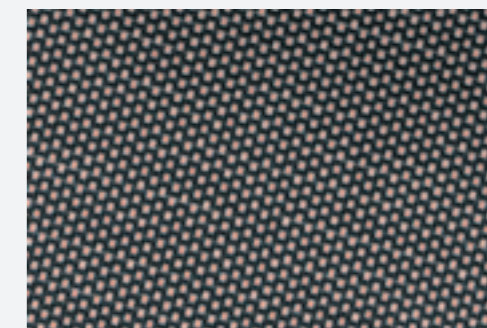
SERGE 1 % (100) / SERGE 600

Collection of fabrics made from fiberglass covered with PVC. Fabrics made of this group have a distinctive diagonal „serge” weave, which guarantees them an unusual dimensional stability. High fire resistance and very good technical parameters of fabrics provide users with visual comfort in rooms, thus protecting against overheating the interior.



BLACK OUT

High-end blackout fabrics (Serge 600 BO Lunar, Polyscreen 314 BO) effectively block sunlight coming into the room. It is ideal solution for conference rooms, audio-visual, photographic studios, etc. High dimensional stability, high technical parameters and interesting colours are without a doubt advantages of fabrics in this group.



SOLTIS 92 / SOLTIS 99

Polyester technical fabric coated with PVC, manufactured with patented technology Preconstraint Ferrari®. The unique technology gives fabric high stability and protects it against deformations even in large size blinds. High technical parameters guarantee optical and thermal comfort. The quality components used in production of this fabric ensures color fastness. Thanks to the smooth surface, the fabric is difficult to absorb dirt or get stained.



SERGE 600

WHITE - WHITE



60002002

GREY - WHITE



60001002

PEARL - GREY



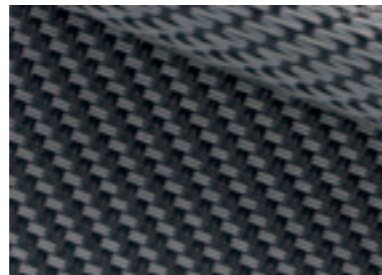
60007007

GREY - GREY



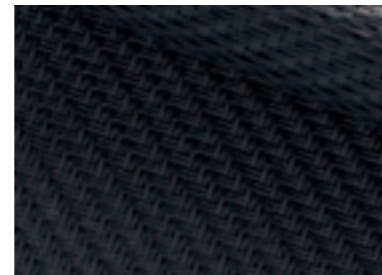
60001001

GREY - CHARCOAL



60001010

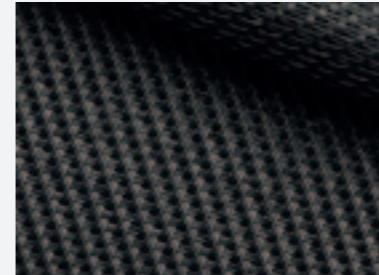
CHARCOAL - CHARCOAL



60010010

SERGE 600

PURE BLACK



60030030

CHARCOAL - BRONZE



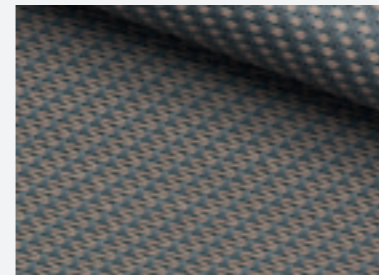
60010011

SANDSTONE



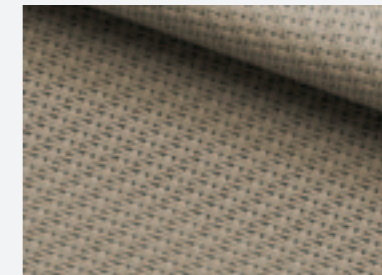
60033033

GREY - SAND



60001003

LINEN - LINEN



60008008

LINEN - WITE

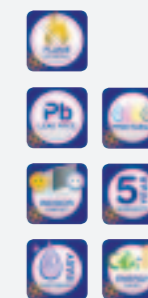


60008002

	composition	weight [g/m ²]	thickness [mm]	light fastness blue scale level EN ISO 105 B02 EN ISO 105 B04	openness factor [%]	EN 14501				application
						TS [%]	RS [%]	AS [%]	TV [%]	
White - White	42% glasfibre + 58% pvc	525	0.74	>7	5	21/21	65.9/66.3	13.2/12.7	21.2/21.2	interior / exterior SERGE 600
Grey - White						6.7/6.7	37.2/26.9	56.2/66.4	6.6/6.6	
Pearl - Grey						10.1/10.1	38.3/39.4	51.7/50.5	8.4/8.4	
Grey - Grey						3.5/3.5	15.1/15.1	81.3/81.4	3.6/3.6	
Grey - Charcoal						3.6/3.6	9.9/12.6	86.5/83.8	3.6/3.6	
Charcoal - Charcoal						3.6/3.6	5.0/4.8	91.4/91.6	3.6/3.6	
Tearing resistance (daN) UNE EN ISO 4674-1 method 2 - Warp: 8.5, Weft: 7.5 Breaking strength (daN/5cm) UNE EN ISO 1421 - Warp: 260, Weft: 225 Flame retardant - Certificate on request										



	composition	weight [g/m ²]	thickness [mm]	light fastness blue scale level EN ISO 105 B02 EN ISO 105 B04	openness factor [%]	EN 14501				application
						TS [%]	RS [%]	AS [%]	TV [%]	
Pure Black	42% glasfibre + 58% pvc	525	0.74	>7	5	5.9	3.7	90.4	5.9	interior / exterior SERGE 600
Charcoal - Bronze						6.1	6.5/6.0	87.4/87.9	6.1	
Sandstone						7.1	20.4/20.5	72.4/72.5	6.8	
Grey - Sand						4.7	26.5/21.5	68.8/73.8	4.5	
Linen - Linen						14.9	52.5/52.7	32.5/32.4	12.9	
Linen - Wite						15.5	58.2/56.4	26.4/28.1	13.7	
Tearing resistance (daN) UNE EN ISO 4674-1 method 2 - Warp: 8.5, Weft: 7.5 Breaking strength (daN/5cm) UNE EN ISO 1421 - Warp: 260, Weft: 225 Flame retardant - Certificate on request										



SERGE 1%

WHITE - WHITE



61002002

GREY - WHITE



61001002

PEARL - GREY



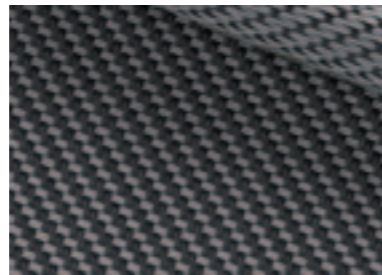
61007007

GREY - GREY



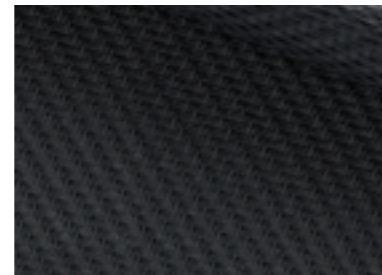
61001001

GREY - CHARCOAL



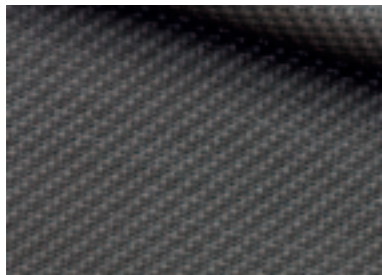
61001010

CHARCOAL - CHARCOAL



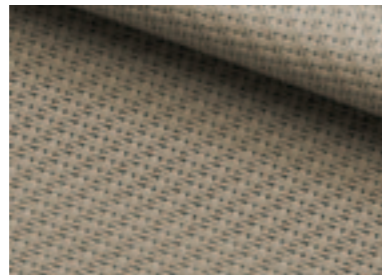
61010010

BRONZE - BRONZE



61011011

LINEN - LINEN



61008008

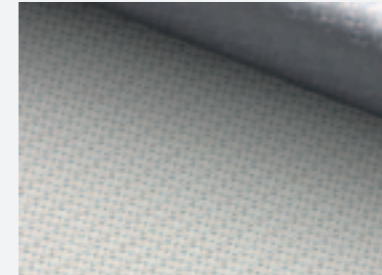
	composition	weight [g/m ²]	thickness [mm]	light fastness blue scale level EN ISO 105 B02 EN ISO 105 B04	openness factor [%]	EN 14501				application						
						TS [%]	RS [%]	AS [%]	TV [%]							
White - White	42% glasfibre + 58% pvc	638	0.78	>7	1	12.8	71.3	15.9	12.9	interior / exterior						
Grey - White						2.2	44.8/31.2	53/66.6	2							
Pearl - Grey						2.8	36.9	60.3	2.1							
Grey - Grey						2.4	17.4	80.2	2.2							
Grey - Charcoal						1.2	10.5/14	88.3/84.8	1.2							
Charcoal - Charcoal						1.1	5.9	93	1.1							
Bronze - Bronze						1.4	8.6	90	1.3							
Linen - Linen						5.9	54.2	39.9	3.7							
Tearing resistance (daN) UNE EN ISO 4674-1 method 2 - Warp: 5.9, Weft: 6.2 Breaking strength (daN/5cm) UNE EN ISO 1421 - Warp: 321, Weft: 277 Flame retardant - Certificate on request																



SERGE 600

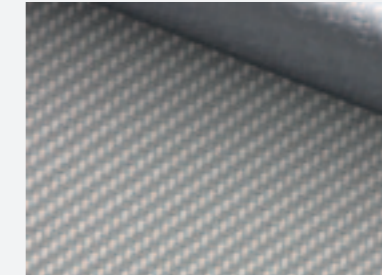
BO LUNAR

WHITE - WHITE



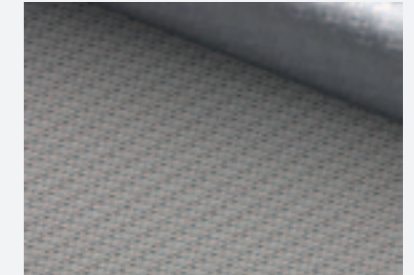
680002002

WHITE - PERL GREY



680002007

PEARL GREY - PEARL GREY



680007007

WHITE - GREY



680001002

OYSTER SHELL



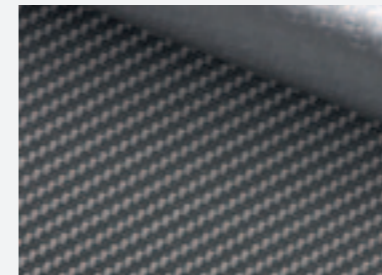
680033001

GREY - GREY



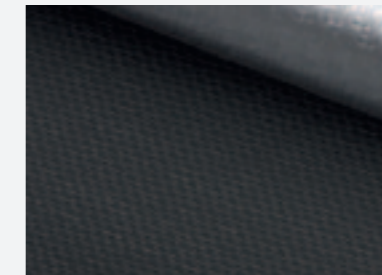
680001001

GREY - CHARCOAL



680001010

CHARCOAL - CHARCOAL



680010010

	composition	weight [g/m ²]	thickness [mm]	light fastness blue scale level EN ISO 105 B04	openness factor [%]	EN 14501				application						
						TS [%]	RS [%]	AS [%]	TV [%]							
White - White	33% GLASFIBRE 47% PVC 20% PVC LAMINATE	678	0.73	>7	0	0	68.8/33.7	31.2/66.3	0	interior / exterior						
White - Perl Grey						0	47.8/33.2	52.2/66.8	0							
Pearl Grey - Pearl Grey						0	35.5/34	64.5/66	0							
White - Grey						0	40.3/33.7	59.7/66.3	0							
Oyster Shell						0	18.2/33.4	81.8/66.6	0							
Grey - Grey						0	17.2/33.1	82.8/66.9	0							
Grey - Charcoal						0	11/33.7	89/66.3	0							
Charcoal - Charcoal						0	6.2/33.4	93.8/66.6	0							
Tearing resistance (daN) UNE EN ISO 4674-1 method 2 - Warp: 8.5, Weft: 9 Breaking strength (daN/5cm) UNE EN ISO 1421 - Warp: 224.2, Weft: 176.6 Flame retardant - Certificate on request																



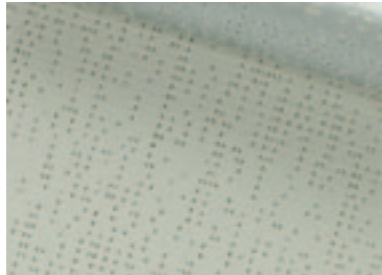
SOLTIS® 99

WHITE



50992055

QUARTZ



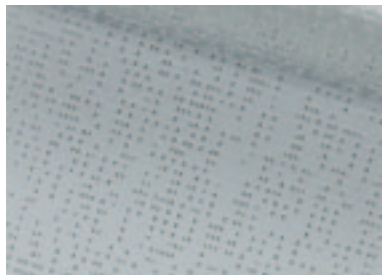
509950285

SANDY BEIGE



509950286

SPUME



509950284

LIGHT GREY



50992058

ALU



50992059

ANTRACITE



50992068

	composition	weight [g/m ²]	thickness [mm]	light fastness grey scale level EN ISO 105 B04	openness factor [%]	EN 14501				application
						TS [%]	RS [%]	AS [%]	TV [%]	
White	Polyester / PVC	290	0.32	4/5, 4/5	3	14/14	47/63	39/23	13	interior
Quartz				4/5, 5/5		11/11	47/60	42/29	9	
Sandy Beige				4/5, 5/5		10/10	43/44	47/46	7	
Spume				4/5, 4/5		12/12	47/60	41/28	9	
Light Grey				4/5, 5/5		8/8	44/43	48/49	6	
Alu				4/5, 4/5		6	43	51	5	
Antracite				4/5, 5/5		3/3	33/8	64/89	3	

Tear strength (daN) DIN 53.363 - Warp: 11, Weft: 13
 Tensile strength (daN/5cm) EN ISO 1421 - Warp: 160, Weft: 170
 Flame retardant - certificate on request



SOLTIS® 99

SOLTIS® 92

CHARCOAL



50922047

CONCRETE



50922167

GLOSSY



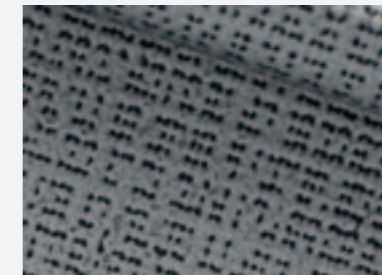
50922065

SILVER



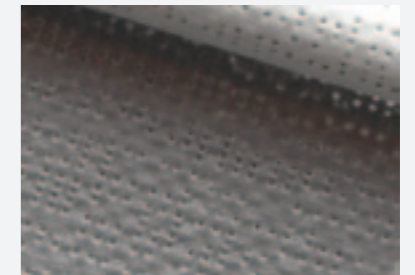
50922048

SILVER BLACK



50922045

SILVER - WHITE



50922051

SANDY BEIGE



50922135

WHITE



50922044

	composition	weight [g/m ²]	thickness [mm]	light fastness grey scale level EN ISO 105 B04	openness factor [%]	EN 14501				application
						TS [%]	RS [%]	AS [%]	TV [%]	
Charcoal	Polyester / PVC	420	0.45	5/5	4	5	8	87	5	interior / exterior
Concrete				5/5		6	19	75	5	
Glossy				4/5		10	46	44	7	
Silver				2/5		8	46	46	8	
Silver Black				5/5		4	35	61	4	
Silver - White				4/5, 3/5		12/12	49/70	39/18	11/11	
Sandy Beige				5/5		11	46	43	8	
White				2/5		19	68	13	17	

Tear strength (daN) DIN 53.363 - Warp: 45, Weft: 20
 Tensile strength (daN/5cm) EN ISO 1421 - Warp: 310, Weft: 210
 Flame retardant - certificate on request



SOLTIS® 92

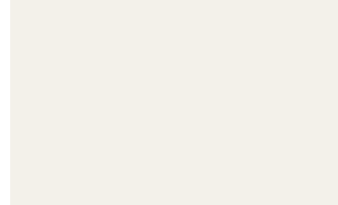
CONSTRUCTION

COLOURS

RAL 9016 MAT



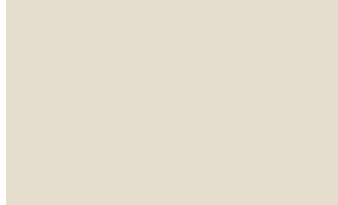
RAL 9010 MAT



RAL 9001 MAT



RAL 1013 MAT



RAL 1015 MAT



RAL 1006 MAT



RAL 7035 MAT



RAL 7001 MAT



RAL 5014 MAT



RAL 7037 MAT



RAL 7012 MAT



RAL 7015MAT



RAL 7024 MAT



RAL 7016 MAT



RAL 7021 MAT



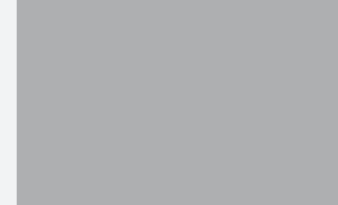
CONSTRUCTION

COLOURS

RAL 9005 MAT



RAL 9006 MAT



RAL 9007 MAT



DB 703 MAT



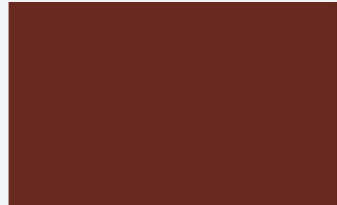
FSM 71319 MAT



RAL 8014 MAT



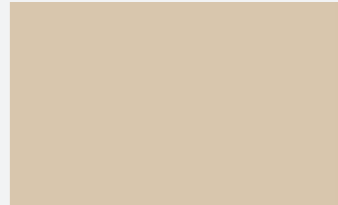
RAL 8016 MAT



RAL 3004 MAT



VSR 240 SATIN



VRS 780 MAT

